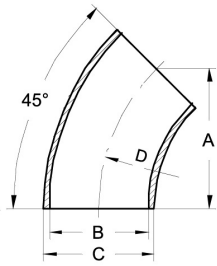
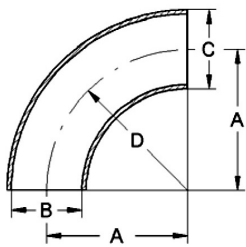
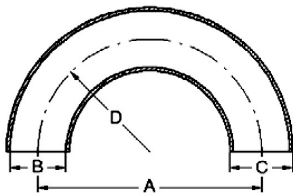


Fittings for welding DIN 11852
Art.No
EUR
Art.No
EUR
Bend 45° inch


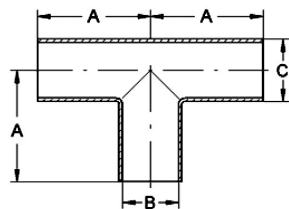
DN	A	B	C	D	AISI304		AISI316L-1.4404	
1"	18	22,9	25,4	27,5	561103	16,40	561203	23,70
1,5"	30	35,1	38,1	45	561104	24,80	561204	39,20
2"	46	47,8	50,8	67,5	561105	30,10	561205	46,10
2,5"	57	60,5	63,5	82,5	561106	42,80	561206	67,80
3"	65,5	72,1	76,1	95	561107	67,60	561207	97,30
4"	93,5	97,6	101,6	133,5	561108	133,90	561208	175,90

Similar to DIN 11852
Bend 90° inch


DN	A	B	C	D	AISI304		AISI316L-1.4404	
1"	27,5	22,9	25,4	27,5	533703	16,40	533803	23,70
1,5"	45	35,1	38,1	45	533704	24,80	533804	39,20
2"	67,5	47,8	50,8	67,5	533705	30,10	533805	46,10
2,5"	82,5	60,5	63,5	82,5	533706	43,20	533806	53,60
3"	95	72,1	76,1	95	533707	56,40	533807	70,20
4"	133,5	97,6	101,6	133,5	533708	91,90	533808	112,10

Similar to DIN 11852
Bend 180° inch


DN	A	B	C	D	AISI304		AISI316L-1.4404	
1"	55	22,9	25,4	27,5	598003	Enquiry	598103	Enquiry
1,5"	90	35,1	38,1	45	598004	Enquiry	598104	Enquiry
2"	135	47,8	50,8	67,5	598005	Enquiry	598105	Enquiry
2,5"	165	60,5	63,76	82,5	598006	Enquiry	598106	Enquiry
3"	190	72,8	76,06	95	598007	Enquiry	598107	Enquiry
4"	267	97,4	101,6	133,5	598008	Enquiry	598108	Enquiry

Similar to DIN 11852
T-piece DIN 11852


DN	A	B	C	AISI304		AISI316L-1.4404	
10	26	10	13	539830	Enquiry	539930	43,90
15	35	16	19	539831	39,10	539931	46,60
20	40	20	23	539832	42,20	539932	50,20
25	50	26	29	539833	32,60	539933	34,70
32	55	32	35	539834	37,20	539934	44,30
40	60	38	41	539835	38,20	539935	45,60
50	70	50	53	539836	43,30	539936	54,50
65	80	66	70	534337	51,30	534437	72,10
80	90	81	85	534338	62,50	534438	90,50
100	100	100	104	534339	90,70	534439	117,20
125	187,5	125	129	534341	265,50	534441	310,30
150	225	150	154	534342	371,20	534442	460,40